

# Christian Care for Families

Mothers' Union is a Christian membership community committed to demonstrating the Christian faith in action through nurturing family in its many forms.

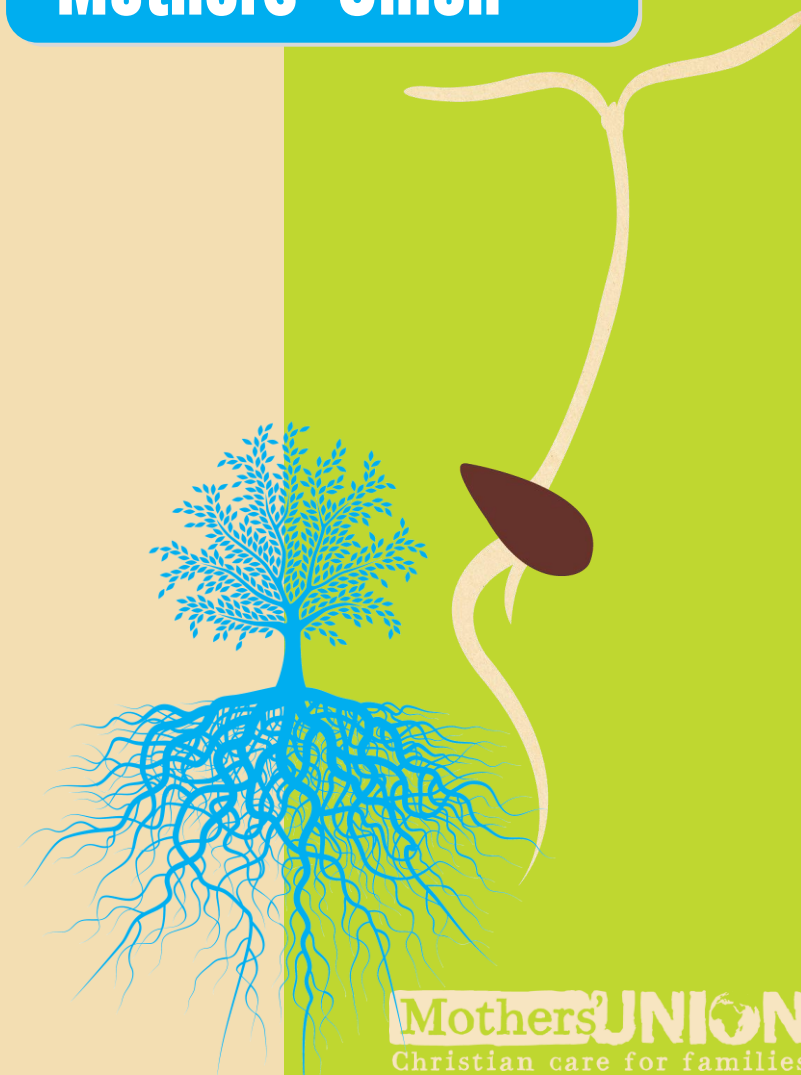
It may surprise you to know that this community is not simply made up of married mothers! In fact we are a community of men as well as women, those who are single as well as those who are married, the young and the young at heart, those who are parents, and those who are not. Our diverse membership is made up of 4 million Christians from six continents and countless cultures – but who are united in prayer and their commitment to delivering transformational care for families right where it matters – in the heart of communities.

Mothers' Union  
Mary Sumner House  
24 Tufon Street,  
London SW1P 3RB

tel 020 7222 5533 email [mu@themothersunion.org](mailto:mu@themothersunion.org)  
[www.themothersunion.org](http://www.themothersunion.org)  
Registered charity number 240531

**Mothers' UNION**  
Christian care for families

## A Guide to Mothers' Union



**Mothers' UNION**  
Christian care for families

## Christian faith in action

Mothers' Union is a Christian organisation made up of inspirational members who respond to the needs of families and communities. Through fellowship and hard work members support each other, nurture individuals, families and society as a whole.

They do this by

- praying for relationships to be flourishing and loving
- campaigning for social justice for those on the margins and for greater recognition of the value of stable family life
- enabling development of all kinds: economic, relational and personal so that marriage and family life are strengthened

Working with some of the most marginalised communities in the world our volunteers and trainers help people lift themselves out of poverty, improve health and hygiene and family relationships.

In the UK & Ireland members facilitate marriage preparation for couples marrying in church, work with families facing separation through imprisonment or divorce and offer a community focus for families.

And of course, all over the world we support parents in doing what we see as the most difficult and the most rewarding job in the world – safely raising children.

**“MEMBERS STRIVE TO SUPPORT FAMILIES EVERYWHERE IN PRAYER & WORSHIP AND LOVE & SERVICE**

### HELP US GROW

By joining Mothers' Union you can help families through praying, campaigning or volunteering in local projects in your area. Through your membership subscription you will automatically be supporting our programmes fighting poverty and gender inequality all over the world.

## Belonging

Whether you are looking for support, fellowship or simply a place to meet like-minded individuals, Mothers' Union is the place for you. Membership is open to anyone who has been baptised in the Trinity, and who can support our aims and objectives, which are:-

- to promote and support married life
- to encourage parents in their role to develop the faith life of their children
- to maintain a worldwide fellowship of Christians united in prayer, worship and service
- to promote conditions in society favourable to stable family life and the protection of children
- to help those whose family life has met with adversity

### Types of Membership.

There are three main ways of belonging to Mothers' Union as a member – so we're confident that you will find one which suits your lifestyle.

**Local membership** offers you a chance to make new friends, reach out to the community where you live, have fun and share new experiences. Local groups (**branches**) are often based in churches and meet regularly to pray together, support each other and get involved with local, national and international social outreach and campaigns. For those who cannot attend local meetings area membership, known as **diocesan membership**, enables you to remain in touch and become involved in supporting local families without having to commit to regular meetings. All members receive our membership magazine *Families Worldwide*.

**Central Membership:** is for those who want to support and engage with our work but cannot attend local meetings. You will receive a copy of our Christian lifestyle magazine, *Families First*, six times a year as well as the Mothers' Union members magazine *Families Worldwide* to keep you up to date with Mothers' Union worldwide.